



AGENDA

SPECIAL BOARD MEETING / PUBLIC FORUM

Wednesday, May 29, 2019, 6:00 p.m.

Fallbrook Regional Health District, Community Room, 138 S. Brandon Rd., Fallbrook

A. CALL MEETING TO ORDER / ROLL CALL / PLEDGE OF ALLEGIANCE

A Special Meeting may be called at any time by the President, or three Board members, by delivering notice to each Board member and to each local newspaper or general circulation, radio, or television station requesting such notice in writing, personally or by mail. Such notice must be delivered personally or by mail at least twenty-four (24) hours before the time of such meeting as specified in the notice. The call and notice shall specify the time and place of the special meeting and the business to be transacted. No other business shall be considered at special meetings. Such written notice may be dispensed with as to any Board member, who at, or prior to the time the meeting convenes, files with the Secretary a written waiver of notice. Such waiver may be given by telegram. Such written notice may also be dispensed with as to any member who is actually present at the meeting at the time it convenes.

B. ADDITIONS TO AGENDA

Pursuant to the Brown Act, additions to the Agenda as posted are exceptional, and expressly limited to three specific situations, as set forth in Government Code 54954.2(b): (1) an "emergency" as determined by majority vote of the board; (2) a 2/3 vote of the board finding that an item requires immediate action and the need for this action arose in time after the agenda was posted; or (3) the item was continued from an earlier meeting (no more than 5 days earlier), at which time the item was validly posted on the agenda of the earlier meeting.

C. BOARD MEMBER AND PUBLIC COMMENTS

Opportunity for board members and citizens to speak on items of interest within subject matter jurisdiction of the District. Please note that, for comments made on items not appearing on the current agenda, the Board may take no action as to the comment at the current meeting (Gov't Code 54954.3[a]), and the Board is allowed only a brief response to the speaker's comment. For the record, please state your name. "Request to speak" cards should be filled out in advance and presented to the Board President or the recording secretary. The Board has a policy limiting any speaker to not more than five minutes.

D. PRESENTATIONS

D1. Public Forum – Transition to Zone-Based Elections – Discussion of Proposed Maps

E. ADJOURNMENT

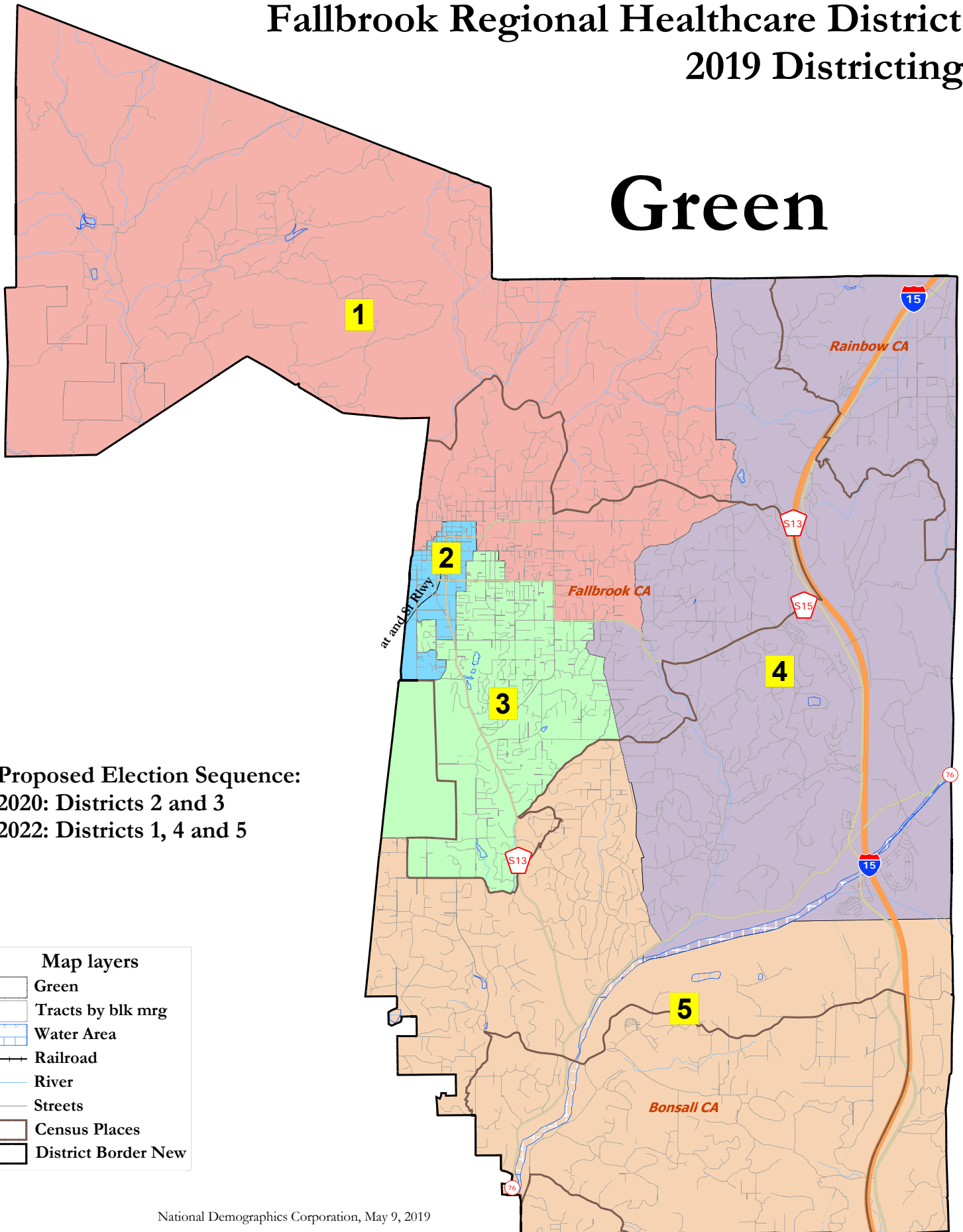
I certify that on May 22, 2019 I posted a copy of the foregoing agenda near the regular meeting place of the Board of Directors of Fallbrook Regional Health District, said time being at least 24 hours in advance of the meeting. The American with Disabilities Act provides that no qualified individual with a disability shall be excluded from participation in or denied the benefits of District business. If you need assistance to participate in this meeting, please contact the District office 24 hours prior to the meeting at 760-731-9187.

A handwritten signature in blue ink that reads "Linda Bannerman".

Board Secretary/Clerk

Fallbrook Regional Healthcare District 2019 Districting

Green



Proposed Election Sequence:
 2020: Districts 2 and 3
 2022: Districts 1, 4 and 5

- Map layers**
- Green
 - Tracts by blk mrg
 - Water Area
 - Railroad
 - River
 - Streets
 - Census Places
 - District Border New

National Demographics Corporation, May 9, 2019

Fallbrook Regional Healthcare District - Green Map

District		1	2	3	4	5	Total
Ideal	Total Pop	10,218	10,302	10,265	10,160	10,013	50,958
10,192	Deviation from ideal	26	110	73	-32	-179	289
	% Deviation	0.26%	1.08%	0.72%	-0.31%	-1.76%	2.84%
Total Pop	% Hisp	33%	73%	32%	20%	18%	35%
	% NH White	62%	21%	63%	73%	74%	58%
	% NH Black	1%	3%	1%	1%	1%	1%
	% Asian-American	3%	2%	3%	5%	5%	3%
Citizen Voting Age Pop	Total	7,889	4,681	7,599	7,835	8,500	36,504
	% Hisp	19%	55%	24%	14%	16%	23%
	% NH White	73%	34%	72%	79%	77%	70%
	% NH Black	2%	7%	2%	1%	1%	2%
	% Asian/Pac.Isl.	5%	3%	2%	5%	4%	4%
Voter Registration (Nov 2016)	Total	5,880	2,532	5,902	6,874	6,697	27,885
	% Latino est.	19%	46%	20%	12%	10%	18%
	% Spanish-Surnamed	17%	42%	18%	11%	9%	16%
	% Asian-Surnamed	1%	1%	1%	2%	2%	1%
	% Filipino-Surnamed	1%	1%	0%	1%	1%	1%
	% NH White est.	77%	44%	77%	79%	85%	76%
Voter Turnout (Nov 2016)	Total	4,872	1,792	4,924	5,881	5,785	23,252
	% Latino est.	17%	44%	18%	11%	9%	16%
	% Spanish-Surnamed	16%	40%	16%	10%	8%	14%
	% Asian-Surnamed	1%	0%	1%	2%	2%	1%
	% Filipino-Surnamed	1%	1%	0%	1%	1%	1%
	% NH White est.	79%	47%	79%	80%	86%	79%
Voter Turnout (Nov 2014)	Total	2,871	715	2,893	3,601	3,632	13,711
	% Latino est.	9%	24%	9%	6%	6%	8%
	% Spanish-Surnamed	8%	21%	8%	6%	5%	8%
	% Asian-Surnamed	1%	1%	1%	1%	2%	1%
	% Filipino-Surnamed	0%	1%	0%	1%	1%	1%
	% NH White est.	87%	61%	87%	90%	90%	87%
ACS Pop. Est.	Total	11,045	10,760	10,633	10,301	10,258	52,997
	Age						
Age	age0-19	24%	30%	27%	21%	20%	24%
	age20-60	49%	54%	52%	48%	48%	50%
	age60plus	27%	16%	21%	31%	33%	25%
Immigration	immigrants	18%	24%	21%	14%	13%	18%
	naturalized	37%	33%	41%	57%	70%	44%
Language spoken at home	english	67%	54%	63%	80%	83%	69%
	spanish	28%	44%	34%	14%	11%	26%
	asian-lang	3%	2%	1%	2%	4%	2%
	other lang	2%	1%	2%	3%	2%	2%
Language Fluency	Speaks Eng. "Less than Very Well"	17%	26%	20%	9%	7%	16%
Education (among those age 25+)	hs-grad	57%	55%	56%	56%	53%	55%
	bachelor	18%	12%	15%	23%	27%	20%
	graduatedegree	9%	6%	8%	12%	12%	9%
Child in Household	child-under18	25%	37%	32%	20%	22%	27%
Pct of Pop. Age 16+	employed	50%	53%	50%	50%	53%	51%
Household Income	income 0-25k	19%	21%	21%	15%	16%	18%
	income 25-50k	26%	31%	24%	18%	15%	22%
	income 50-75k	18%	20%	19%	16%	18%	18%
	income 75-200k	30%	26%	33%	39%	37%	33%
	income 200k-plus	8%	2%	3%	12%	14%	8%
Housing Stats	single family	84%	63%	73%	97%	91%	83%
	multi-family	16%	37%	27%	3%	9%	17%
	rented	36%	52%	40%	19%	19%	32%
	owned	64%	48%	60%	81%	81%	68%

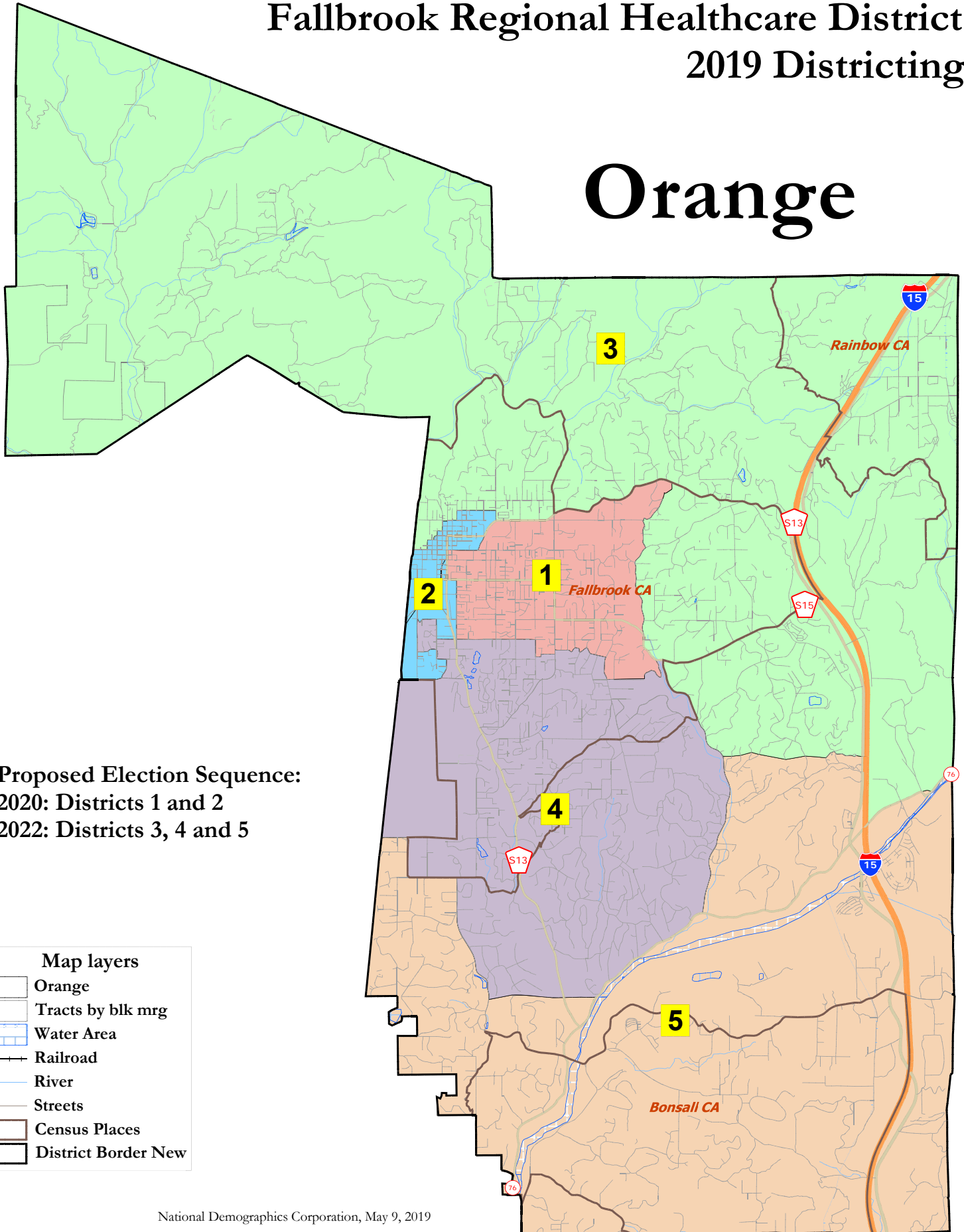
Total population data from the 2010 Decennial Census.

Surname-based Voter Registration and Turnout data from the California Statewide Database.

Latino voter registration and turnout data are Spanish-surname counts adjusted using Census Population Department undercount estimates. NH White and NH Black registration and turnout counts estimated by NDC. Citizen Voting Age Pop., Age, Immigration, and other demographics from the 2012-2016 American Community Survey and Special Tabulation 5-year data.

Fallbrook Regional Healthcare District 2019 Districting

Orange



National Demographics Corporation, May 9, 2019

Fallbrook Regional Healthcare District - Orange Map

District		1	2	3	4	5	Total
Ideal	Total Pop	10,098	10,028	10,089	10,466	10,277	50,958
10,192	Deviation from ideal	-94	-164	-103	274	85	438
	% Deviation	-0.92%	-1.61%	-1.01%	2.69%	0.83%	4.30%
Total Pop	% Hisp	38%	73%	27%	18%	20%	35%
	% NH White	56%	21%	68%	76%	70%	58%
	% NH Black	1%	3%	1%	1%	2%	1%
	% Asian-American	3%	2%	3%	3%	6%	3%
Citizen Voting Age Pop	Total	7,368	4,570	8,057	8,643	7,866	36,504
	% Hisp	25%	55%	17%	16%	16%	23%
	% NH White	67%	33%	77%	79%	76%	70%
	% NH Black	1%	7%	1%	1%	2%	2%
	% Asian/Pac.Isl.	6%	4%	3%	2%	6%	4%
Voter Registration (Nov 2016)	Total	5,496	2,296	6,409	7,054	6,630	27,885
	% Latino est.	22%	47%	16%	11%	12%	18%
	% Spanish-Surnamed	20%	42%	15%	10%	11%	16%
	% Asian-Surnamed	1%	1%	1%	1%	2%	1%
	% Filipino-Surnamed	1%	1%	1%	0%	1%	1%
	% NH White est.	75%	43%	79%	85%	78%	76%
	% NH Black	1%	6%	1%	1%	2%	2%
Voter Turnout (Nov 2016)	Total	4,487	1,621	5,380	6,108	5,657	23,252
	% Latino est.	20%	45%	14%	10%	12%	16%
	% Spanish-Surnamed	18%	41%	13%	9%	10%	14%
	% Asian-Surnamed	1%	0%	1%	1%	2%	1%
	% Filipino-Surnamed	1%	1%	0%	0%	1%	1%
	% NH White est.	77%	46%	81%	86%	79%	79%
	% NH Black	1%	6%	1%	1%	2%	2%
Voter Turnout (Nov 2014)	Total	2,418	672	3,389	3,879	3,354	13,711
	% Latino est.	11%	24%	8%	5%	7%	8%
	% Spanish-Surnamed	10%	22%	7%	5%	6%	8%
	% Asian-Surnamed	1%	1%	1%	1%	1%	1%
	% Filipino-Surnamed	0%	1%	0%	0%	1%	1%
	% NH White est.	84%	60%	89%	92%	88%	87%
	% NH Black est.	4%	12%	1%	1%	2%	2%
ACS Pop. Est.	Total	10,814	10,419	10,575	10,660	10,528	52,997
Age	age0-19	28%	30%	20%	19%	25%	24%
	age20-60	52%	54%	49%	47%	48%	50%
	age60plus	20%	16%	31%	33%	27%	25%
Immigration	immigrants	21%	24%	17%	14%	14%	18%
	naturalized	35%	33%	43%	56%	67%	44%
Language spoken at home	english	60%	54%	72%	80%	80%	69%
	spanish	37%	44%	22%	15%	14%	26%
	asian-lang	2%	2%	3%	2%	3%	2%
	other lang	2%	1%	3%	3%	2%	2%
Language Fluency	Speaks Eng. "Less than Very Well"	21%	26%	14%	11%	8%	16%
Education (among those age 25+)	hs-grad	58%	55%	57%	55%	52%	55%
	bachelor	14%	12%	20%	23%	26%	20%
	graduatedegree	6%	6%	11%	12%	11%	9%
Child in Household	child-under18	32%	36%	20%	21%	26%	27%
Pct of Pop. Age 16+	employed	50%	53%	50%	50%	53%	51%
Household Income	income 0-25k	20%	21%	17%	18%	16%	18%
	income 25-50k	28%	31%	22%	18%	16%	22%
	income 50-75k	20%	20%	17%	17%	18%	18%
	income 75-200k	28%	26%	34%	39%	37%	33%
	income 200k-plus	4%	2%	10%	9%	13%	8%
Housing Stats	single family	70%	65%	93%	89%	90%	83%
	multi-family	30%	35%	7%	11%	10%	17%
	rented	44%	52%	27%	22%	23%	32%
	owned	56%	48%	73%	78%	77%	68%

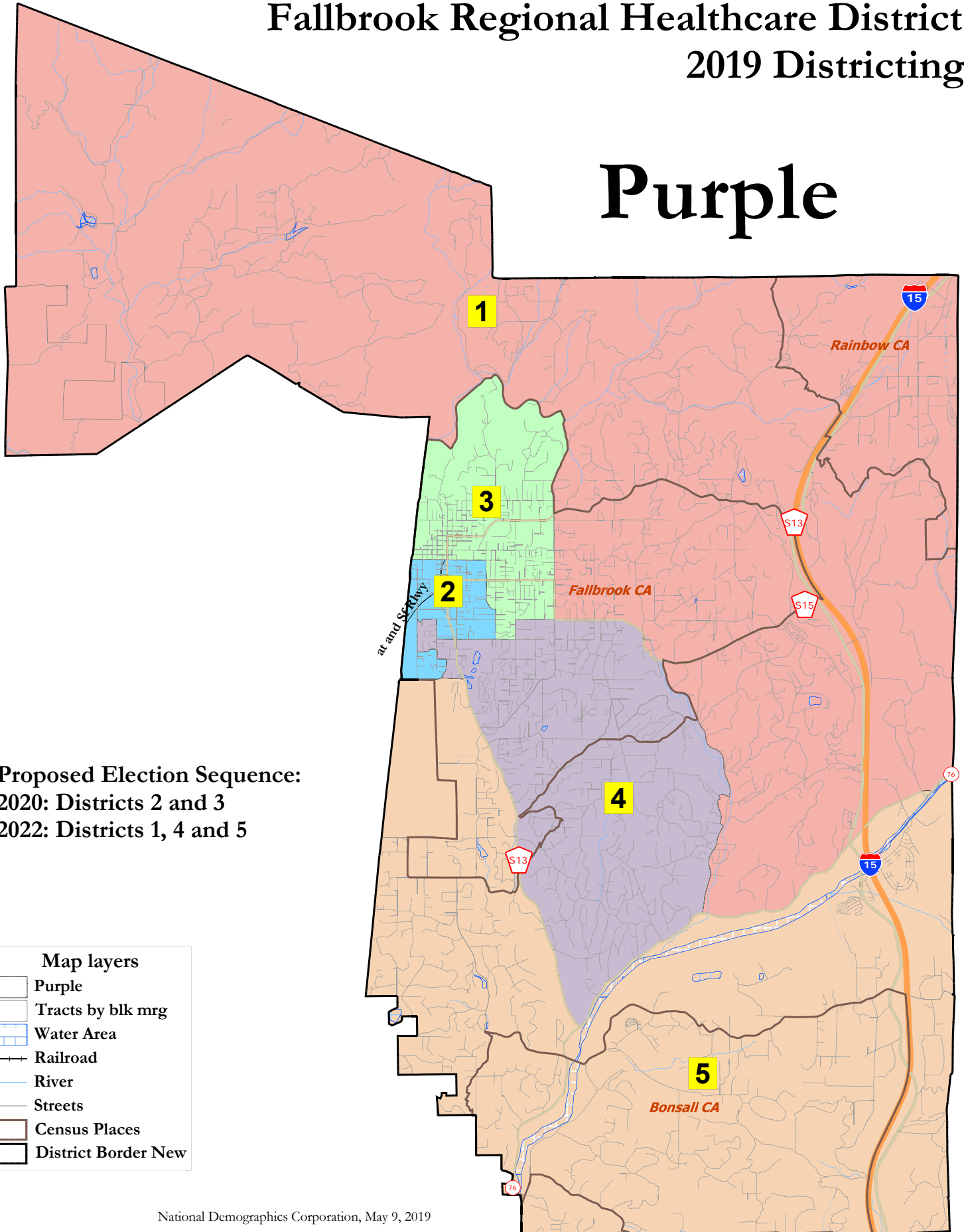
Total population data from the 2010 Decennial Census.

Surname-based Voter Registration and Turnout data from the California Statewide Database.

Latino voter registration and turnout data are Spanish-surname counts adjusted using Census Population Department undercount estimates. NH White and NH Black registration and turnout counts estimated by NDC. Citizen Voting Age Pop., Age, Immigration, and other demographics from the 2012-2016 American Community Survey and Special Tabulation 5-year data.

Fallbrook Regional Healthcare District 2019 Districting

Purple



National Demographics Corporation, May 9, 2019

Fallbrook Regional Healthcare District - Purple Map

District		1	2	3	4	5	Total
Ideal	Total Pop	10,269	10,383	9,957	9,905	10,444	50,958
10,192	Deviation from ideal	77	191	-235	-287	252	539
	% Deviation	0.76%	1.87%	-2.31%	-2.82%	2.47%	5.29%
Total Pop	% Hisp	21%	68%	47%	18%	21%	35%
	% NH White	73%	26%	49%	75%	69%	58%
	% NH Black	1%	3%	1%	1%	2%	1%
	% Asian-American	4%	2%	2%	3%	6%	3%
Citizen Voting Age Pop	Total	8,373	5,091	6,586	8,442	8,012	36,504
	% Hisp	14%	51%	27%	18%	16%	23%
	% NH White	78%	40%	66%	77%	76%	70%
	% NH Black	1%	7%	2%	1%	2%	2%
	% Asian/Pac.Isl.	6%	2%	4%	2%	5%	4%
Voter Registration (Nov 2016)	Total	7,091	2,838	4,568	6,663	6,725	27,885
	% Latino est.	13%	42%	28%	11%	13%	18%
	% Spanish-Surnamed	11%	38%	25%	10%	11%	16%
	% Asian-Surnamed	1%	1%	1%	1%	2%	1%
	% Filipino-Surnamed	1%	1%	1%	0%	1%	1%
	% NH White est.	82%	51%	69%	85%	78%	76%
	% NH Black	1%	5%	1%	1%	2%	2%
Voter Turnout (Nov 2016)	Total	6,047	2,067	3,663	5,765	5,710	23,252
	% Latino est.	11%	39%	26%	10%	12%	16%
	% Spanish-Surnamed	10%	35%	23%	9%	11%	14%
	% Asian-Surnamed	1%	0%	1%	1%	2%	1%
	% Filipino-Surnamed	1%	1%	1%	0%	1%	1%
	% NH White est.	84%	54%	71%	86%	79%	79%
	% NH Black	1%	5%	1%	1%	2%	2%
Voter Turnout (Nov 2014)	Total	3,777	906	1,973	3,659	3,397	13,711
	% Latino est.	6%	22%	14%	6%	7%	8%
	% Spanish-Surnamed	6%	19%	12%	5%	6%	8%
	% Asian-Surnamed	1%	1%	1%	1%	1%	1%
	% Filipino-Surnamed	0%	1%	0%	0%	1%	1%
	% NH White est.	90%	66%	81%	91%	88%	87%
	% NH Black est.	1%	10%	4%	1%	2%	2%
ACS Pop. Est.	Total	10,855	10,804	10,519	10,103	10,715	52,997
Age	age0-19	18%	31%	29%	20%	25%	24%
	age20-60	48%	55%	52%	48%	48%	50%
	age60plus	35%	15%	19%	32%	27%	25%
Immigration	immigrants	14%	25%	22%	14%	14%	18%
	naturalized	47%	33%	34%	54%	68%	44%
Language spoken at home	english	78%	52%	56%	79%	80%	69%
	spanish	14%	46%	41%	16%	15%	26%
	asian-lang	4%	2%	1%	2%	3%	2%
	other lang	4%	1%	1%	3%	2%	2%
Language Fluency	Speaks Eng. "Less than Very Well"	10%	27%	24%	12%	8%	16%
Education (among those age 25+)	hs-grad	56%	54%	60%	55%	52%	55%
	bachelor	23%	12%	12%	22%	26%	20%
	graduatedegree	13%	6%	5%	11%	11%	9%
Child in Household	child-under18	17%	38%	33%	22%	27%	27%
Pct of Pop. Age 16+	employed	50%	53%	51%	50%	53%	51%
Household Income	income 0-25k	14%	21%	22%	18%	16%	18%
	income 25-50k	17%	31%	34%	18%	16%	22%
	income 50-75k	17%	21%	19%	17%	18%	18%
	income 75-200k	38%	25%	23%	38%	38%	33%
	income 200k-plus	13%	2%	2%	9%	12%	8%
Housing Stats	single family	99%	61%	68%	87%	91%	83%
	multi-family	1%	39%	32%	13%	9%	17%
	rented	18%	53%	50%	24%	22%	32%
	owned	82%	47%	50%	76%	78%	68%

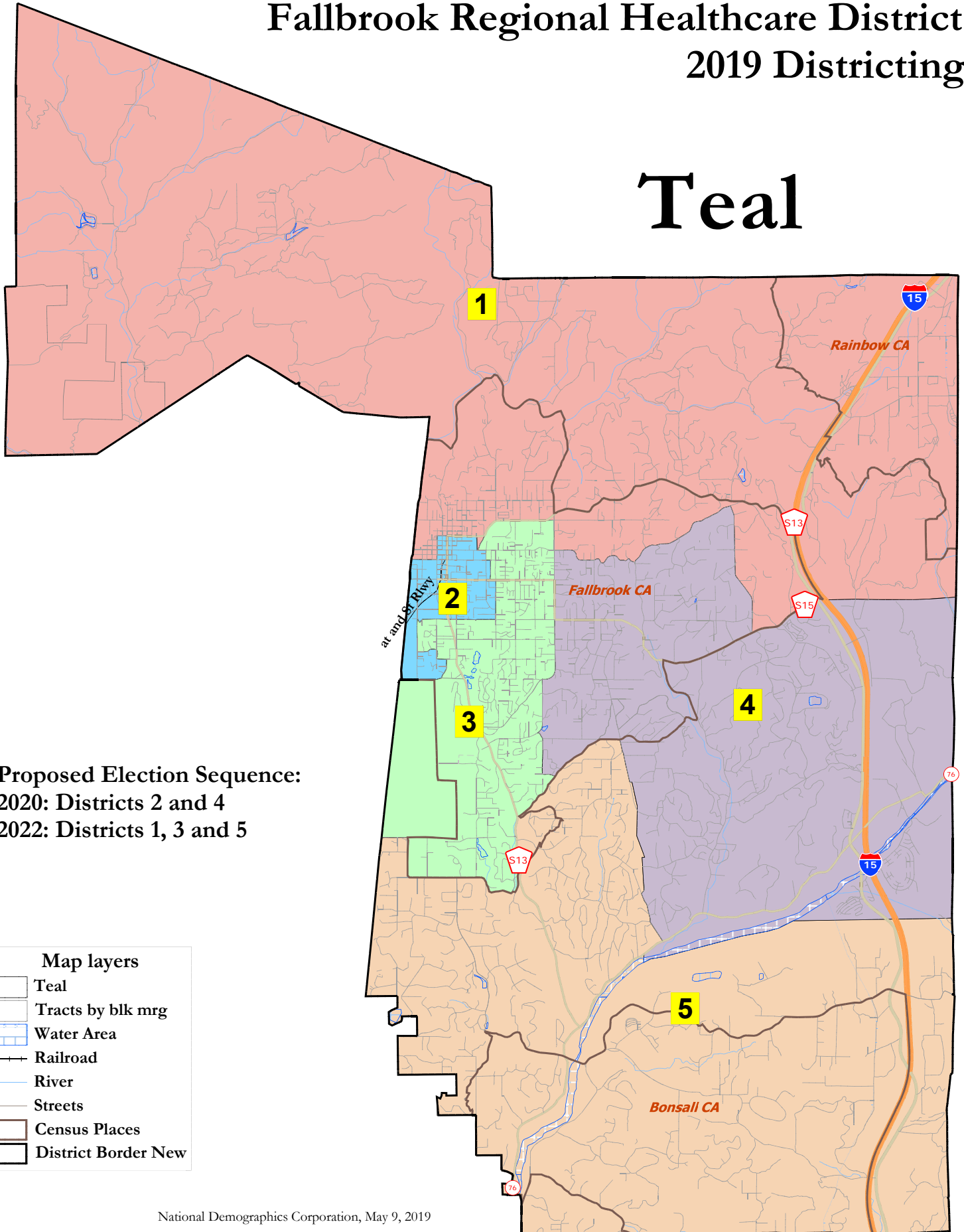
Total population data from the 2010 Decennial Census.

Surname-based Voter Registration and Turnout data from the California Statewide Database.

Latino voter registration and turnout data are Spanish-surname counts adjusted using Census Population Department undercount estimates. NH White and NH Black registration and turnout counts estimated by NDC. Citizen Voting Age Pop., Age, Immigration, and other demographics from the 2012-2016 American Community Survey and Special Tabulation 5-year data.

Fallbrook Regional Healthcare District 2019 Districting

Teal



National Demographics Corporation, May 9, 2019

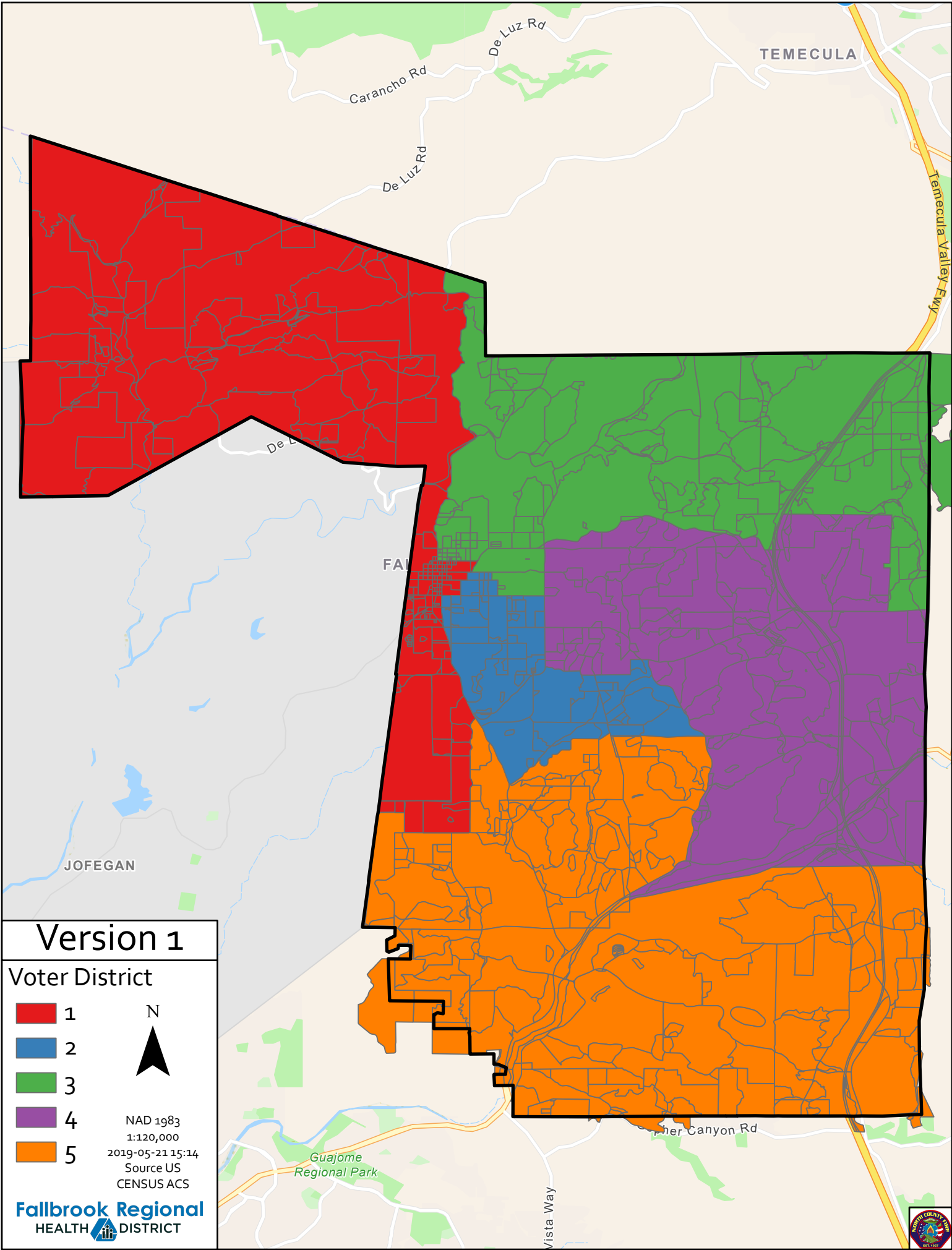
Fallbrook Regional Healthcare District - Teal Map

District		1	2	3	4	5	Total
Ideal	Total Pop	10,459	10,100	10,008	10,378	10,013	50,958
10,192	Deviation from ideal	267	-92	-184	186	-179	451
	% Deviation	2.62%	-0.90%	-1.81%	1.83%	-1.76%	4.43%
Total Pop	% Hisp	38%	70%	34%	16%	18%	35%
	% NH White	57%	24%	60%	76%	74%	58%
	% NH Black	1%	3%	2%	1%	1%	1%
	% Asian-American	3%	2%	3%	5%	5%	3%
Citizen Voting Age Pop	Total	7,709	4,881	7,127	8,287	8,500	36,504
	% Hisp	23%	52%	22%	13%	16%	23%
	% NH White	71%	38%	70%	79%	77%	70%
	% NH Black	1%	7%	2%	1%	1%	2%
	% Asian/Pac.Isl.	4%	1%	4%	5%	4%	4%
Voter Registration (Nov 2016)	Total	5,792	2,670	5,419	7,307	6,697	27,885
	% Latino est.	21%	43%	21%	10%	10%	18%
	% Spanish-Surnamed	19%	39%	19%	9%	9%	16%
	% Asian-Surnamed	1%	1%	1%	1%	2%	1%
	% Filipino-Surnamed	1%	1%	0%	1%	1%	1%
	% NH White est.	75%	49%	74%	82%	85%	76%
	% NH Black	1%	5%	2%	1%	1%	2%
Voter Turnout (Nov 2016)	Total	4,783	1,927	4,461	6,296	5,785	23,252
	% Latino est.	19%	40%	19%	9%	9%	16%
	% Spanish-Surnamed	17%	36%	17%	8%	8%	14%
	% Asian-Surnamed	1%	0%	1%	1%	2%	1%
	% Filipino-Surnamed	1%	1%	0%	1%	1%	1%
	% NH White est.	77%	52%	77%	83%	86%	79%
	% NH Black	1%	5%	2%	1%	1%	2%
Voter Turnout (Nov 2014)	Total	2,866	830	2,546	3,837	3,632	13,711
	% Latino est.	11%	22%	9%	5%	6%	8%
	% Spanish-Surnamed	10%	19%	9%	5%	5%	8%
	% Asian-Surnamed	1%	1%	1%	1%	2%	1%
	% Filipino-Surnamed	0%	1%	0%	1%	1%	1%
	% NH White est.	86%	63%	85%	92%	90%	87%
	% NH Black est.	1%	12%	4%	1%	2%	2%
ACS Pop. Est.	Total	11,031	10,569	10,507	10,632	10,258	52,997
Age	age0-19	23%	31%	28%	21%	20%	24%
	age20-60	50%	55%	52%	46%	48%	50%
	age60plus	28%	15%	20%	33%	33%	25%
Immigration	immigrants	18%	25%	21%	12%	13%	18%
	naturalized	40%	32%	38%	60%	70%	44%
Language spoken at home	english	67%	52%	61%	83%	83%	69%
	spanish	28%	46%	36%	12%	11%	26%
	asian-lang	3%	2%	1%	2%	4%	2%
	other lang	2%	1%	1%	3%	2%	2%
Language Fluency	Speaks Eng. "Less than Very Well"	17%	26%	22%	8%	7%	16%
Education (among those age 25+)	hs-grad	58%	55%	55%	56%	53%	55%
	bachelor	17%	12%	15%	24%	27%	20%
	graduatedegree	9%	5%	7%	12%	12%	9%
Child in Household	child-under18	24%	38%	33%	20%	22%	27%
Pct of Pop. Age 16+	employed	50%	53%	51%	49%	53%	51%
Household Income	income 0-25k	18%	21%	21%	16%	16%	18%
	income 25-50k	25%	31%	26%	17%	15%	22%
	income 50-75k	17%	21%	19%	16%	18%	18%
	income 75-200k	32%	25%	32%	39%	37%	33%
	income 200k-plus	8%	2%	3%	12%	14%	8%
Housing Stats	single family	89%	60%	68%	97%	91%	83%
	multi-family	11%	40%	32%	3%	9%	17%
	rented	33%	53%	45%	17%	19%	32%
	owned	67%	47%	55%	83%	81%	68%

Total population data from the 2010 Decennial Census.

Surname-based Voter Registration and Turnout data from the California Statewide Database.

Latino voter registration and turnout data are Spanish-surname counts adjusted using Census Population Department undercount estimates. NH White and NH Black registration and turnout counts estimated by NDC. Citizen Voting Age Pop., Age, Immigration, and other demographics from the 2012-2016 American Community Survey and Special Tabulation 5-year data.



Version 1

Voter District

- 1
- 2
- 3
- 4
- 5

N



NAD 1983
 1:120,000
 2019-05-21 15:14
 Source US
 CENSUS ACS



Fallbrook Health Care District Election District
Version 1 CVAP Analysis
2019-05-21

<u>District 1</u>			
	CVAP#	CVAP %	% Total Pop
Total Population (Sum)	10825		21.1%
Total Population 18+	7490	69.2%	
Total Hispanic or Latino 18+	4077	54.4%	
Total Not Hispanic or Latino 18+	3413	45.6%	
Population of One Race 18+	3325	44.4%	
White Alone 18+	2874	38.4%	
Black or African American Alone 18+	228	3.0%	
American Indian and Alaska Native Alone 18+	33	0.4%	
Asian Alone 18+	160	2.1%	
Native Hawaiian and Other Pacific Islander Alone 18+	20	0.3%	
Some Other Race Alone 18+	10	0.1%	

Fallbrook Health Care District Election District
Version 1 CVAP Analysis
2019-05-21

<u>District 2</u>			
	CVAP#	CVAP %	% Total Pop
Total Population (Sum)	9890		19.3%
Total Population 18+	7509	75.9%	
Total Hispanic or Latino 18+	2463	32.8%	
Total Not Hispanic or Latino 18+	5046	67.2%	
Population of One Race 18+	4943	65.8%	
White Alone 18+	4705	62.7%	
Black or African American Alone 18+	45	0.6%	
American Indian and Alaska Native Alone 18+	19	0.3%	
Asian Alone 18+	151	2.0%	
Native Hawaiian and Other Pacific Islander Alone 18+	10	0.1%	
Some Other Race Alone 18+	13	0.2%	

Fallbrook Health Care District Election District
Version 1 CVAP Analysis
2019-05-21

<u>District 3</u>			
	CVAP#	CVAP %	% Total Pop
Total Population (Sum)	9168		17.9%
Total Population 18+	7027	76.6%	
Total Hispanic or Latino 18+	2484	33.4%	
Total Not Hispanic or Latino 18+	4543	61.1%	
Population of One Race 18+	4447	59.8%	
White Alone 18+	4202	56.5%	
Black or African American Alone 18+	44	0.6%	
American Indian and Alaska Native Alone 18+	30	0.4%	
Asian Alone 18+	146	2.0%	
Native Hawaiian and Other Pacific Islander Alone 18+	19	0.3%	
Some Other Race Alone 18+	6	0.1%	

Fallbrook Health Care District Election District
Version 1 CVAP Analysis
2019-05-21

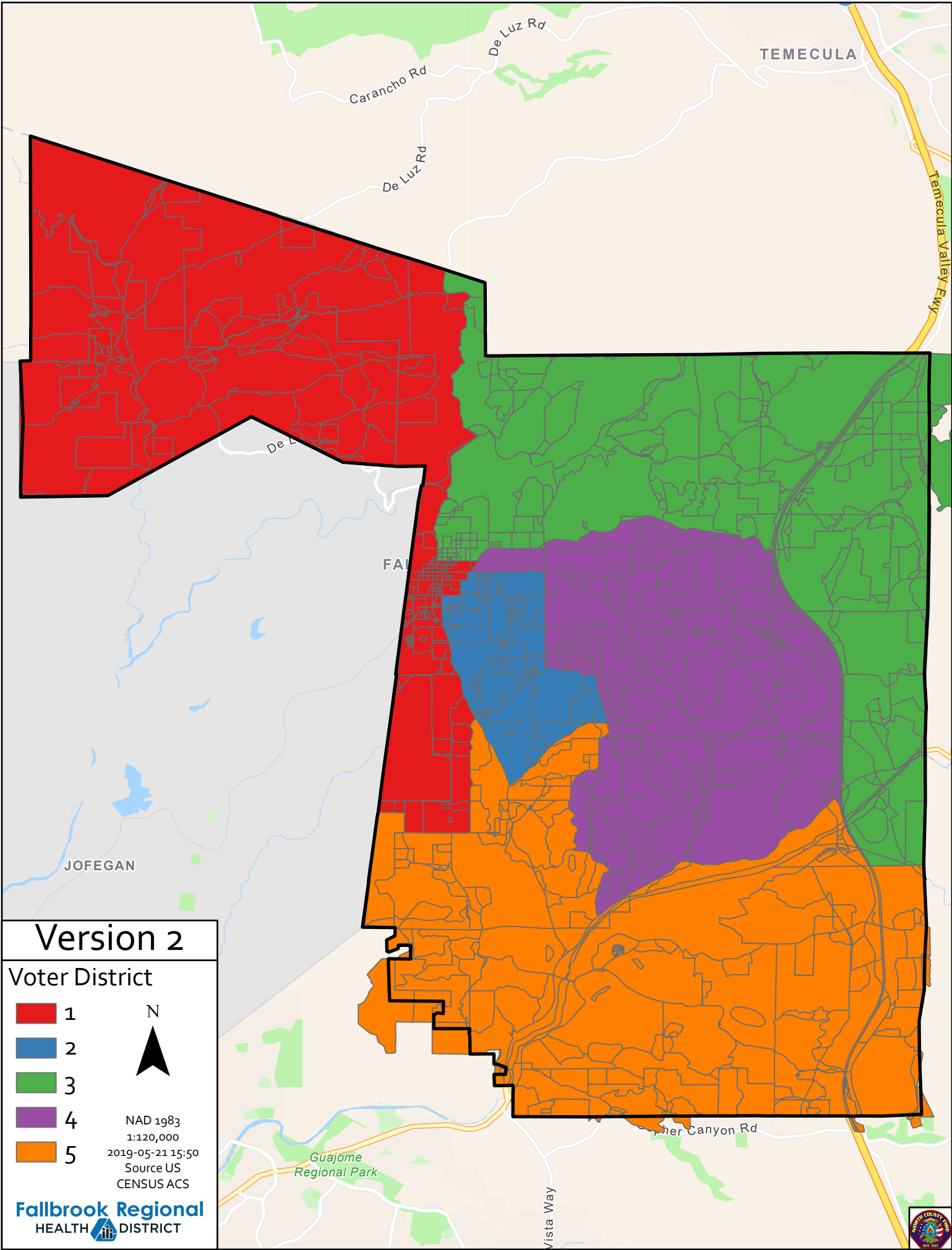
<u>District 4</u>			
	CVAP#	CVAP %	% Total Pop
Total Population (Sum)	9746		19.0%
Total Population 18+	7814	80.2%	
Total Hispanic or Latino 18+	1163	14.8%	
Total Not Hispanic or Latino 18+	6651	84.7%	
Population of One Race 18+	6539	83.3%	
White Alone 18+	6079	77.4%	
Black or African American Alone 18+	80	1.0%	
American Indian and Alaska Native Alone 18+	23	0.3%	
Asian Alone 18+	319	4.1%	
Native Hawaiian and Other Pacific Islander Alone 18+	23	0.3%	
Some Other Race Alone 18+	15	0.2%	

Fallbrook Health Care District Election District
Version 1 CVAP Analysis
2019-05-21

<u>District 5</u>			
	CVAP#	CVAP %	% Total Pop
Total Population (Sum)	11714		22.8%
Total Population 18+	9457	80.7%	
Total Hispanic or Latino 18+	1418	17.5%	
Total Not Hispanic or Latino 18+	8039	99.2%	
Population of One Race 18+	7885	97.3%	
White Alone 18+	7427	91.7%	
Black or African American Alone 18+	80	1.0%	
American Indian and Alaska Native Alone 18+	37	0.5%	
Asian Alone 18+	315	3.9%	
Native Hawaiian and Other Pacific Islander Alone 18+	14	0.2%	
Some Other Race Alone 18+	12	0.1%	

Fallbrook Health Care District Election District
Version 1 CVAP Analysis
2019-05-21

District Totals			
	CVAP#	CVAP %	% Total Pop
Total Population (Sum)	51343		
Total Population 18+	39297	76.5%	
Total Hispanic or Latino 18+	11605	30.8%	
Total Not Hispanic or Latino 18+	27692	73.4%	
Population of One Race 18+	27139	72.0%	
White Alone 18+	25287	67.1%	
Black or African American Alone 18+	477	1.3%	
American Indian and Alaska Native Alone 18+	142	0.4%	
Asian Alone 18+	1091	2.9%	
Native Hawaiian and Other Pacific Islander Alone 18+	86	0.2%	
Some Other Race Alone 18+	56	0.1%	



Version 2

Voter District

- 1
- 2
- 3
- 4
- 5



NAD 1983
 1:120,000
 2019-05-21 15:50
 Source US
 CENSUS ACS



Fallbrook Health Care District Election District
Version 2 CVAP Analysis
2019-05-21

<u>District 1</u>			
	CVAP#	CVAP %	% Total Pop
Total Population (Sum)	10825		21.1%
Total Population 18+	7490	69.2%	
Total Hispanic or Latino 18+	4077	54.4%	
Total Not Hispanic or Latino 18+	3413	45.6%	
Population of One Race 18+	3325	44.4%	
White Alone 18+	2874	38.4%	
Black or African American Alone 18+	228	3.0%	
American Indian and Alaska Native Alone 18+	33	0.4%	
Asian Alone 18+	160	2.1%	
Native Hawaiian and Other Pacific Islander Alone 18+	20	0.3%	
Some Other Race Alone 18+	10	0.1%	

Fallbrook Health Care District Election District
Version 2 CVAP Analysis
2019-05-21

<u>District 2</u>			
	CVAP#	CVAP %	% Total Pop
Total Population (Sum)	10272		20.0%
Total Population 18+	7726	75.2%	
Total Hispanic or Latino 18+	2656	35.4%	
Total Not Hispanic or Latino 18+	5070	67.5%	
Population of One Race 18+	4962	66.1%	
White Alone 18+	4711	62.7%	
Black or African American Alone 18+	50	0.7%	
American Indian and Alaska Native Alone 18+	21	0.3%	
Asian Alone 18+	156	2.1%	
Native Hawaiian and Other Pacific Islander Alone 18+	11	0.1%	
Some Other Race Alone 18+	13	0.2%	

Fallbrook Health Care District Election District
Version 2 CVAP Analysis
2019-05-21

<u>District 3</u>			
	CVAP#	CVAP %	% Total Pop
Total Population (Sum)	9438		18.4%
Total Population 18+	7161	75.9%	
Total Hispanic or Latino 18+	2285	30.7%	
Total Not Hispanic or Latino 18+	4876	65.6%	
Population of One Race 18+	4767	64.1%	
White Alone 18+	4351	58.5%	
Black or African American Alone 18+	78	1.0%	
American Indian and Alaska Native Alone 18+	30	0.4%	
Asian Alone 18+	274	3.7%	
Native Hawaiian and Other Pacific Islander Alone 18+	29	0.4%	
Some Other Race Alone 18+	5	0.1%	

Fallbrook Health Care District Election District
Version 2 CVAP Analysis
2019-05-21

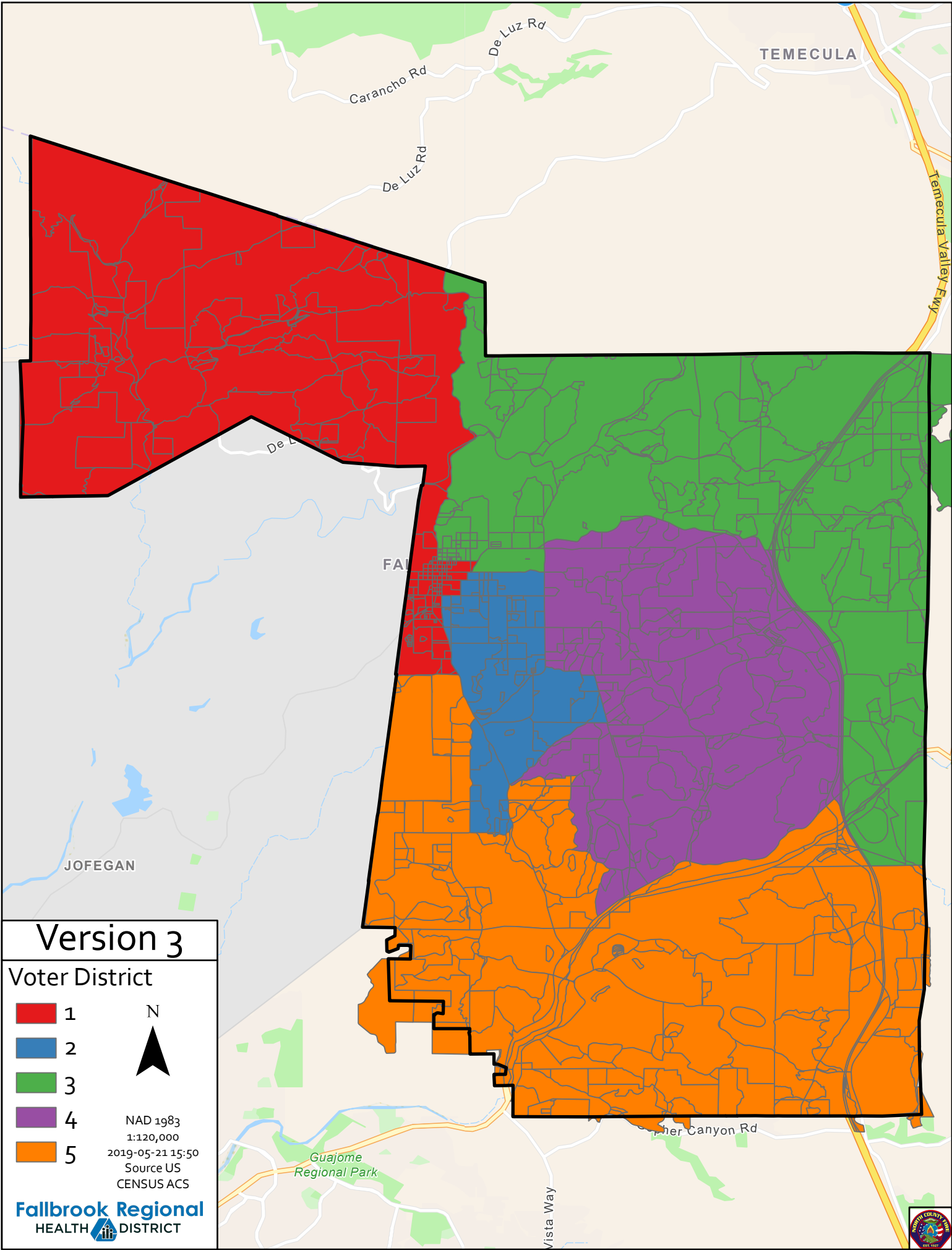
<u>District 4</u>			
	CVAP#	CVAP %	% Total Pop
Total Population (Sum)	10463		20.4%
Total Population 18+	8569	81.9%	
Total Hispanic or Latino 18+	1280	16.3%	
Total Not Hispanic or Latino 18+	7289	92.8%	
Population of One Race 18+	7177	91.4%	
White Alone 18+	6849	87.2%	
Black or African American Alone 18+	52	0.7%	
American Indian and Alaska Native Alone 18+	27	0.3%	
Asian Alone 18+	221	2.8%	
Native Hawaiian and Other Pacific Islander Alone 18+	16	0.2%	
Some Other Race Alone 18+	12	0.2%	

Fallbrook Health Care District Election District
Version 2 CVAP Analysis
2019-05-21

<u>District 5</u>			
	CVAP#	CVAP %	% Total Pop
Total Population (Sum)	10345		20.1%
Total Population 18+	8351	80.7%	
Total Hispanic or Latino 18+	1307	16.1%	
Total Not Hispanic or Latino 18+	7044	87.0%	
Population of One Race 18+	6908	85.3%	
White Alone 18+	6502	80.3%	
Black or African American Alone 18+	69	0.9%	
American Indian and Alaska Native Alone 18+	31	0.4%	
Asian Alone 18+	280	3.5%	
Native Hawaiian and Other Pacific Islander Alone 18+	10	0.1%	
Some Other Race Alone 18+	16	0.2%	

Fallbrook Health Care District Election District
Version 2 CVAP Analysis
2019-05-21

District Totals			
	CVAP#	CVAP %	% Total Pop
Total Population (Sum)	51343		
Total Population 18+	39297	76.5%	
Total Hispanic or Latino 18+	11605	30.8%	
Total Not Hispanic or Latino 18+	27692	73.4%	
Population of One Race 18+	27139	72.0%	
White Alone 18+	25287	67.1%	
Black or African American Alone 18+	477	1.3%	
American Indian and Alaska Native Alone 18+	142	0.4%	
Asian Alone 18+	1091	2.9%	
Native Hawaiian and Other Pacific Islander Alone 18+	86	0.2%	
Some Other Race Alone 18+	56	0.1%	



TEMECULA

Carancho Rd
De Luz Rd

Temecula Valley Fwy

De Luz Rd

De Luz Rd

FALLBROOK

JOEGAN

Her Canyon Rd

Guajome Regional Park

Vista Way

Version 3

Voter District

- 1
- 2
- 3
- 4
- 5



NAD 1983
1:120,000
2019-05-21 15:50
Source US
CENSUS ACS



Fallbrook Health Care District Election District
Version 3 CVAP Analysis
2019-05-21

<u>District 1</u>			
	CVAP#	CVAP %	% Total Pop
Total Population (Sum)	10435		20.3%
Total Population 18+	7157	68.6%	
Total Hispanic or Latino 18+	4028	56.3%	
Total Not Hispanic or Latino 18+	3129	43.7%	
Population of One Race 18+	3048	42.6%	
White Alone 18+	2608	36.4%	
Black or African American Alone 18+	225	3.1%	
American Indian and Alaska Native Alone 18+	31	0.4%	
Asian Alone 18+	155	2.2%	
Native Hawaiian and Other Pacific Islander Alone 18+	20	0.3%	
Some Other Race Alone 18+	9	0.1%	

Fallbrook Health Care District Election District
Version 3 CVAP Analysis
2019-05-21

<u>District 2</u>			
	CVAP#	CVAP %	% Total Pop
Total Population (Sum)	10813		21.1%
Total Population 18+	8130	75.2%	
Total Hispanic or Latino 18+	2742	36.5%	
Total Not Hispanic or Latino 18+	5388	71.8%	
Population of One Race 18+	5277	70.3%	
White Alone 18+	5017	66.8%	
Black or African American Alone 18+	52	0.7%	
American Indian and Alaska Native Alone 18+	24	0.3%	
Asian Alone 18+	160	2.1%	
Native Hawaiian and Other Pacific Islander Alone 18+	11	0.1%	
Some Other Race Alone 18+	13	0.2%	

Fallbrook Health Care District Election District
Version 3 CVAP Analysis
2019-05-21

<u>District 3</u>			
	CVAP#	CVAP %	% Total Pop
Total Population (Sum)	10524		20.5%
Total Population 18+	7929	75.3%	
Total Hispanic or Latino 18+	2646	35.6%	
Total Not Hispanic or Latino 18+	5283	71.0%	
Population of One Race 18+	5163	69.4%	
White Alone 18+	4723	63.5%	
Black or African American Alone 18+	87	1.2%	
American Indian and Alaska Native Alone 18+	33	0.4%	
Asian Alone 18+	284	3.8%	
Native Hawaiian and Other Pacific Islander Alone 18+	31	0.4%	
Some Other Race Alone 18+	5	0.1%	

Fallbrook Health Care District Election District
Version 3 CVAP Analysis
2019-05-21

<u>District 4</u>			
	CVAP#	CVAP %	% Total Pop
Total Population (Sum)	9923		19.3%
Total Population 18+	8261	83.3%	
Total Hispanic or Latino 18+	963	12.3%	
Total Not Hispanic or Latino 18+	7298	92.9%	
Population of One Race 18+	7190	91.6%	
White Alone 18+	6862	87.4%	
Black or African American Alone 18+	46	0.6%	
American Indian and Alaska Native Alone 18+	25	0.3%	
Asian Alone 18+	226	2.9%	
Native Hawaiian and Other Pacific Islander Alone 18+	15	0.2%	
Some Other Race Alone 18+	16	0.2%	

Fallbrook Health Care District Election District
Version 3 CVAP Analysis
2019-05-21

<u>District 5</u>			
	CVAP#	CVAP %	% Total Pop
Total Population (Sum)	9648		18.8%
Total Population 18+	7820	81.1%	
Total Hispanic or Latino 18+	1226	15.1%	
Total Not Hispanic or Latino 18+	6594	81.4%	
Population of One Race 18+	6461	79.8%	
White Alone 18+	6077	75.0%	
Black or African American Alone 18+	67	0.8%	
American Indian and Alaska Native Alone 18+	29	0.4%	
Asian Alone 18+	266	3.3%	
Native Hawaiian and Other Pacific Islander Alone 18+	9	0.1%	
Some Other Race Alone 18+	13	0.2%	

Fallbrook Health Care District Election District
Version 3 CVAP Analysis
2019-05-21

District Totals			
	CVAP#	CVAP %	% Total Pop
Total Population (Sum)	51343		
Total Population 18+	39297	76.5%	
Total Hispanic or Latino 18+	11605	30.8%	
Total Not Hispanic or Latino 18+	27692	73.4%	
Population of One Race 18+	27139	72.0%	
White Alone 18+	25287	67.1%	
Black or African American Alone 18+	477	1.3%	
American Indian and Alaska Native Alone 18+	142	0.4%	
Asian Alone 18+	1091	2.9%	
Native Hawaiian and Other Pacific Islander Alone 18+	86	0.2%	
Some Other Race Alone 18+	56	0.1%	